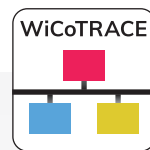


# Terminal



## Terminal: the compact and modular display for your measuring devices

The display unit for all ChronoMaster and QuartzMaster devices offers the greatest flexibility in the smallest space. The compact Terminal was developed for use on a workbench and can be tilted as required. It has a bright and high-resolution 7" display with touch function and its ergonomic design enables users to work productively with the user-friendly software.

## Design your personal measuring workstation

You decide which devices are connected to the Terminal. Whether measuring mechanical watches, quartz watches or even both together – the Terminal can be combined with up to four different measuring devices and expanded at any time.

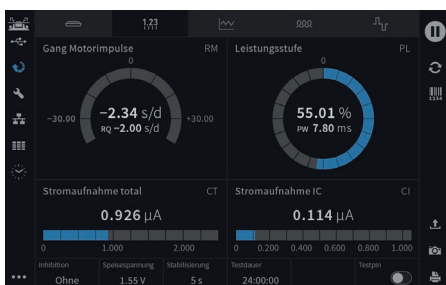
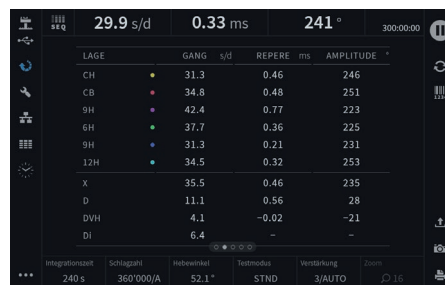
## WiCoTRACE

The Terminal is able to directly access the test programs of the parameter and result management system WiCoTRACE via Ethernet or wireless. The measurement results are stored on the WiCoTRACE database following measurement and can be further processed from there.

# Terminal

## Terminal

- Flexible display unit for all ChronoMaster and QuartzMaster devices, as well as Micromat C
- High-resolution 7" display with touch function and adjustable tilt
- Compact design requires little space on a workbench
- Connect up to 4 different measuring devices via USB or Bluetooth\*
- Up to 2 measurements running simultaneously
- Revised software for productive work
- Regular updates and function enhancements over-the-air (Internet connection required)
- Connection to the powerful test parameter and result management system WiCoTRACE via Ethernet or wireless\*



## Technical data

Operation	Capacitive touchscreen with multi-touch
Languages	German, French, English, Italian, Spanish, Russian, Chinese (traditional)
Display	7" display, 1280 x 800 px resolution
Interface	4x USB type A 1x USB type C 1x Ethernet 1x headphone jack 3.5 mm Bluetooth* and WLAN*
Dimensions	197 x 164 x 130 mm (W x H x D)
Weight	670 g
WiCoTRACE	yes
Results saving	Ring memory for 10 measurements, WiCoTRACE database

## Measurement

Measurement channels	4, with 2 simultaneous measurements
Test positions	12
Measurement programs	100 local programs, WiCoTRACE programs
Compatible devices	ChronoMaster (PRO) ChronoMaster Air ChronoMaster Auto QuartzMaster (PRO) QuartzSensor Micromat C

\* Bluetooth and WLAN with optional dongle.